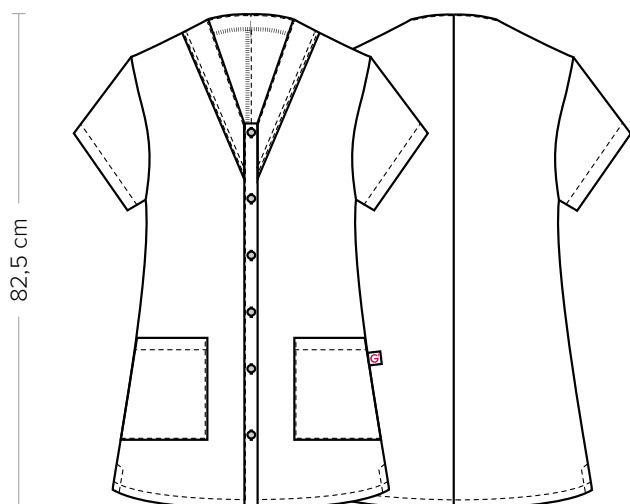


# CAMELIA

CODICE ARTICOLO

COD. Q9K00223

**Giblor's**  
italian work/life specialist



## DETTAGLI

- 2 tasche
- 2 spacchetti laterali

## COLORE

- C02 Grigio chiaro
- U35 Bordeaux
- U32 Nero
- Z48 Blu
- D29 Verde

## TESSUTO

- 65% poliestere
- 35% cotone
- 113 g / m<sup>2</sup>

## TAGLIE

XS ÷ 4XL  
Regular Fit



Le misure indicate si riferiscono alle taglie **S** per i capi femminili, **L** per i capi maschili. Per i capi a taglia unica le misure indicate sono effettive.

La casacca Camelia è realizzata in un leggero policotone melangiato del peso di appena 113 g / m<sup>2</sup>. Presenta una vestibilità Regular Fit, l'abbottonatura centrale a sei bottoni opachi e due tasche dallo stile geometrico. Il tessuto è resistente alle alte temperature.

## COLORI DISPONIBILI



C02 Grigio chiaro



U35 Bordeaux



U32 Nero

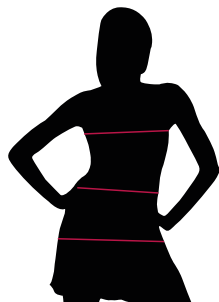


Z48 Blu



D29 Verde

TABELLE TAGLIE  
E CORRISPONDENZE



1  
2  
3  
4

### TABELLA ST-K4 REGULAR FIT

TAGLIA	XS	S	M	L	XL	XXL	XXXL	4XL
1 - SPALLE								
2 - CIRCONFERENZA TORACE	88-92	93-98	99-104	105-110	111-118	119-126	127-134	135-142
3 - CIRCONFERENZA VITA	84-88	89-94	95-100	101-106	107-115	116-124	125-132	133-141
4 - CIRCONFERENZA BACINO	94-98	99-104	105-110	111-116	117-124	125-133	134-141	142-149

**GUIDA ALLE TAGLIE** **1)** Prendere le misure anatomiche (corpo con abbigliamento intimo) senza stringere mantenendo ben teso il metro. **Nota:** nel caso vogliate indossare dei camici già con dell'abbigliamento sotto prendete le misure già abbigliati. **2)** Nel caso tra le misure prese vi fosse una misura a cavallo fra 2 taglie vi consigliamo di prendere quella più grande. **3)** Le misure della tabella sono espresse in centimetri.

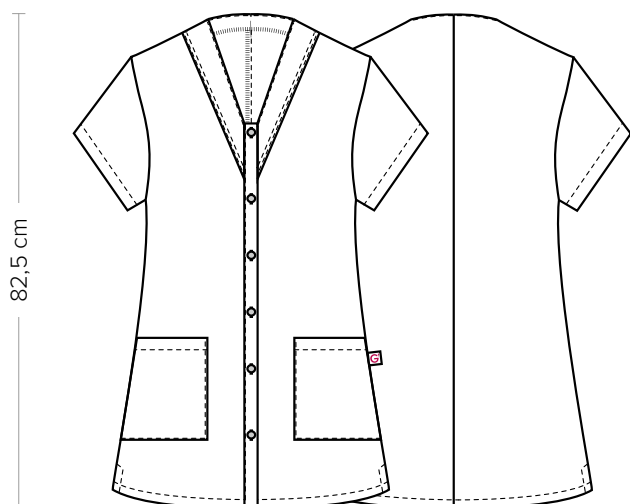
GIBLORS.COM

# CAMELIA

ITEM CODE

**COD. Q9K00223**

**Giblor's**  
italian work/life specialist



## DETAILS

- 2 pockets
- 2 side vents

## COLOURS

- CO2 Light grey
- U35 Burgundy
- U32 Black
- Z48 Blue
- D29 Green

## FABRIC

- 65% polyester
- 35% cotton
- 113 g / m<sup>2</sup>

**SIZES**  
XS ÷ 4XL  
Regular Fit



The measures indicated refer to sizes **S** for women, **L** for men. For one-size-fits-all garments, the measurements indicated are effective.

The Camelia tunic is made of a light melange polycotton weighing just 113 g / m<sup>2</sup>. It has a Regular Fit, a central placket with six opaque buttons and two pockets with a geometric style. The fabric is resistant to high temperatures.

## AVAILABLE COLOURS



CO2 Light grey



U35 Burgundy



U32 Black



Z48 Blue



D29 Green

SIZE TABLES  
AND CORRESPONDENCES

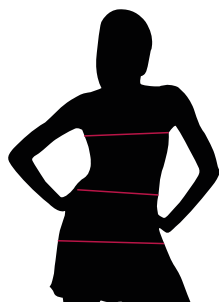


TABLE ST-K4 REGULAR FIT

SIZE	XS	S	M	L	XL	XXL	XXXL	4XL
1 - SHOULDERS								
2 - CHEST CIRCUMFERENCE	88-92	93-98	99-104	105-110	111-118	119-126	127-134	135-142
3 - WAIST CIRCUMFERENCE	84-88	89-94	95-100	101-106	107-115	116-124	125-132	133-141
4 - HIPS CIRCUMFERENCE	94-98	99-104	105-110	111-116	117-124	125-133	134-141	142-149

**SIZE GUIDE** **1)** Take the anatomical measurements (body with underwear) without tightening, keeping the measuring tape taut. Note: in case you want to wear of the gowns already with the clothing underneath take the measurements already dressed. **2)** If there is a measure between 2 sizes between the measurements taken, we advise you to take the bigger one. **3)** The measurements in the table are expressed in centimeters.

**GIBLORS.COM**